

PSC22 SERIES SYSTEMS 22.0kW 48V DC



ELECTRICAL	PSC22 V1	PSC22 V2
AC Input:	Three phase (refer to rectifier spec for full details)	Three phase (refer to rectifier spec for full details)
Frequency Range:	45-66Hz	45-66Hz
Power Factor:	>0.99 (full load)	>0.99 (full load)
Termination:	Three phase L1, L2, L3, N, E 16mm ² terminal blocks Surge protection (40KA 8/20µsec)	Three phase L1, L2, L3, N, E 16mm ² terminal blocks
DC Output:	Nominal Voltage: 24, 48 or 60V DC Max. Output Power: 22.0kW Polarity: Positive or negative earth	24, 48 or 60V DC 22.0kW Positive or negative earth
DC Distribution:	10x load circuit breakers (6-63A) 4x battery circuit breakers (max 125A)	18x load circuit breakers (6-63A) 4x battery circuit breakers (max 125A)
Breaker Fail Detection:	Electronic fail detection	Electronic fail detection
DC Terminals Load: (Rear Connected): Battery:	16mm ² rear connect tunnel terminals 35mm ² rear connect tunnel terminals	16mm ² rear connect tunnel terminals 35mm ² rear connect tunnel terminals
LVD:	500A magnetically latching battery LVD	500A magnetically latching battery LVD

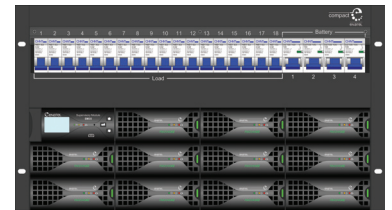
MONITORING & CONTROL

Display:	Multi-lingual alpha numeric backlit display
Communications:	Serial: 1x USB port on front panel for local PC interface TCP/IP: Ethernet interface for communication using SNMP protocol and internal web based configurator* Modbus: Supported via TCP/IP*
LED Indicators:	Green: Power on/monitor OK Yellow: Non urgent alarm Red: Urgent alarm
Audible:	90dBA buzzer mappable to user defined conditions
Controls:	3x push buttons for parameter setting or viewing on front panel
Signal Inputs:	Serial bus for rectifier control and interface to peripheral modules 6x digital inputs, 2x temperature sensors (one fitted by default)
Alarms:	6x alarm relays, 5x of which can be mapped for customised alarm settings
Alarm Contacts:	0.3A 100V volts free changeover contacts
Logging Capacity:	Periodic log, 16,384 records (dependant on number of parameters logged) Event log, 16,384 records (dependant on number of parameters logged)
Connections:	Relay outputs, mini combicon to accept 1.5mm ² wire USB port, USB mini B

*TCP/IP and modbus options only available with SM36 supervisory module.



PSC22 V1



PSC22 V2

ENVIRONMENTAL REQUIREMENTS

Ambient Temperature:	-20°C to +70°C (maximum output power is derated above +50°C)
Storage Temperature:	-30°C to +85°C
Humidity:	5-95% RH (non-condensing)
Altitude:	<2,500m at full power

MECHANICAL

Dimensions W, H, D:	482.6mm (19" mount), 266.7mm (6U), 350.0mm
Weight:	21.0kg (excluding rectifier modules)
Shipping Dimensions W, H, D:	540.0mm, 350.0mm, 435.0mm
Shipping Weight:	30.0kg (excluding rectifier modules)

PART NUMBERS

PSC22 V1:	Compact system, 11x modular rectifiers, 10x load 4x battery MCB's, SM36 supervisory module
PSC22 V2:	Compact system, 11x modular rectifiers, 18x load 4x battery MCB's, SM36 supervisory module

*System part numbers are dependent on configuration options. For final system part numbers consult our sales staff for configuration advice.

CONFIGURATION OPTIONS To be advised at time of order

Rectifiers:	RM2048XE, 2.0kW modular rectifier, 230V AC input, 48V DC output, 41.7A maximum output RM2048HE, 2.0kW modular rectifier, 230V AC input, 48V DC output, 41.7A maximum output RM2048/24, 2.0kW modular rectifier, 230V AC input, 48 or 24V DC output, 41.7A maximum output RM1860/48, 1.8kW modular rectifier, 230V AC input, 60 or 48V DC output, 30.0A maximum output
Supervisory Modules:	SM35, standard monitor featuring full temperature compensation, automated and manual battery testing/equalisation SM36, enhanced monitor featuring full temperature compensation, automated and manual battery testing/equalisation with TCP/IP

OPTIONS

ARBP-1M:	Metal rectifier blanking panel
ASM-ABM24(-24-48-60):	Battery condition monitor for 24, 48 or 60V battery strings
ASM-AC3P:	AC mains monitor

COMPLIANCES

Safety:	EN60950
Immunity:	CISPR24
Emissions:	CISPR22
AC Harmonics:	EN61000-3-2
AC Flicker and Fluctuation:	EN61000-3-3
Other:	CE & RoHS compliant



enatel.net
smart | power | design